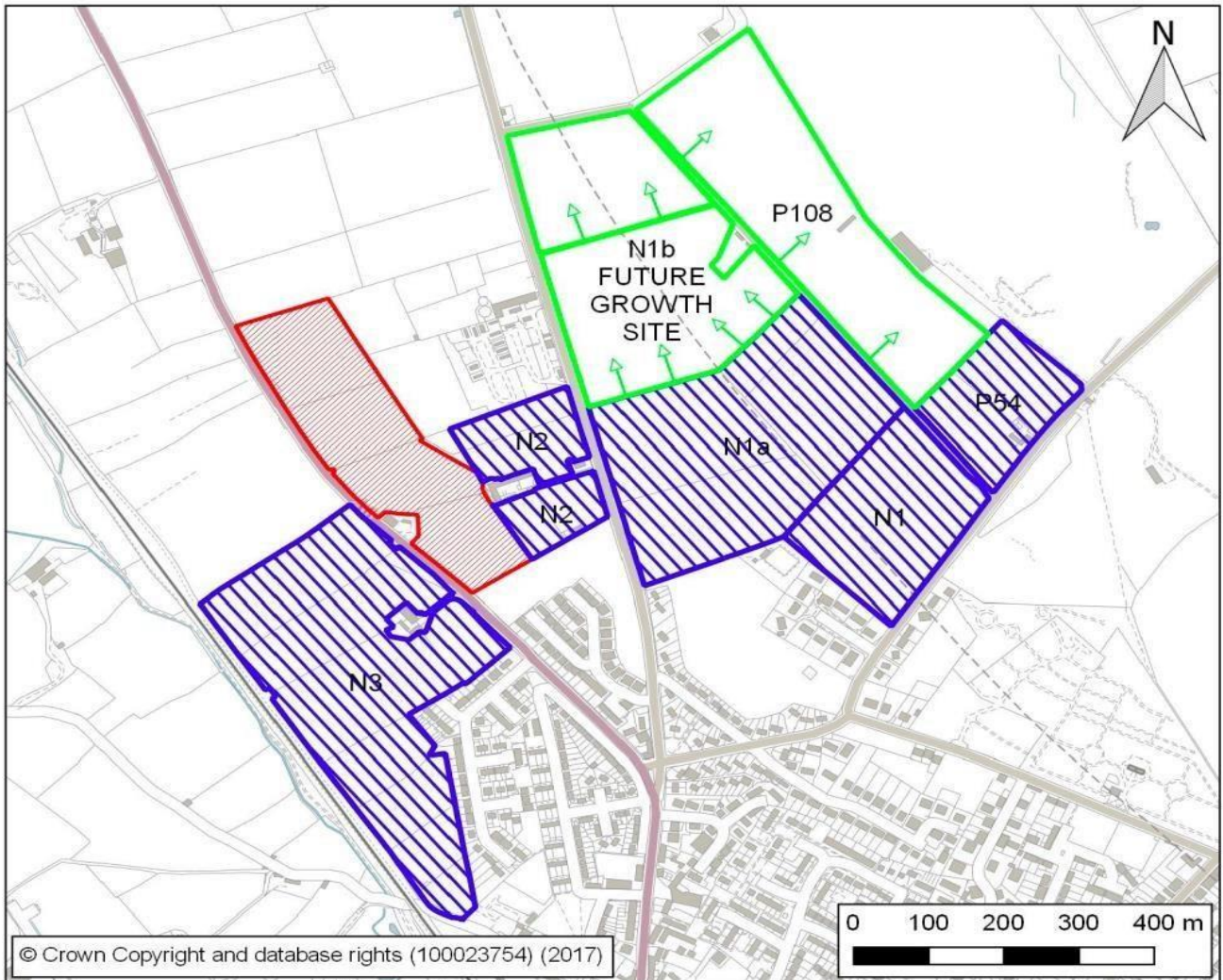


APPENDIX I

Future Growth Areas

Ref	Location	Area (Ha)	Phasing			TOTAL
			2014-19	2019-24	2024-32	
E1	Carleton	23.89		205	300	505
E3	Carleton - Land at Longacres	11.62		120	141	261
E4	Land at Carleton Hall Farm	3.8		32	54	86
N1	Salkeld Road/Fairhill Greenfield	4.4	50	48		98
N1a	Salkeld Road/Fairhill - Reserve Site	10.5		125	125	250
N2	White Ox Farm	2.4		54		54
N3	Raiselands	11.06	70	160	75	305
TC1	Old London Road	0.5		26		26
P2	Gilwilly Road	0.33			14	14
P8	Myers Lane, Norfolk Road	0.63			20	20
P54	Bellevue Farm, Salkeld Road	2.8	0	0	63	63
P71	Brent Road Garages	0.21	5			5
P93	Barn and Yard, Brunswick Road	0.1		4		4
P94	QEGS Annexe, Ullswater Road	0.58			18	18
P115	Car Park off Brentfield Way	0.14		6		6
	TOTAL		124	802	789	1715

Revised Allocations - Future Growth Areas
Penrith North



Date: 12 January 2017
 Scale: 1:8500@A4
 Drawn by: KL/AD
 Sites: N1, N1a, N2, N3 and P54

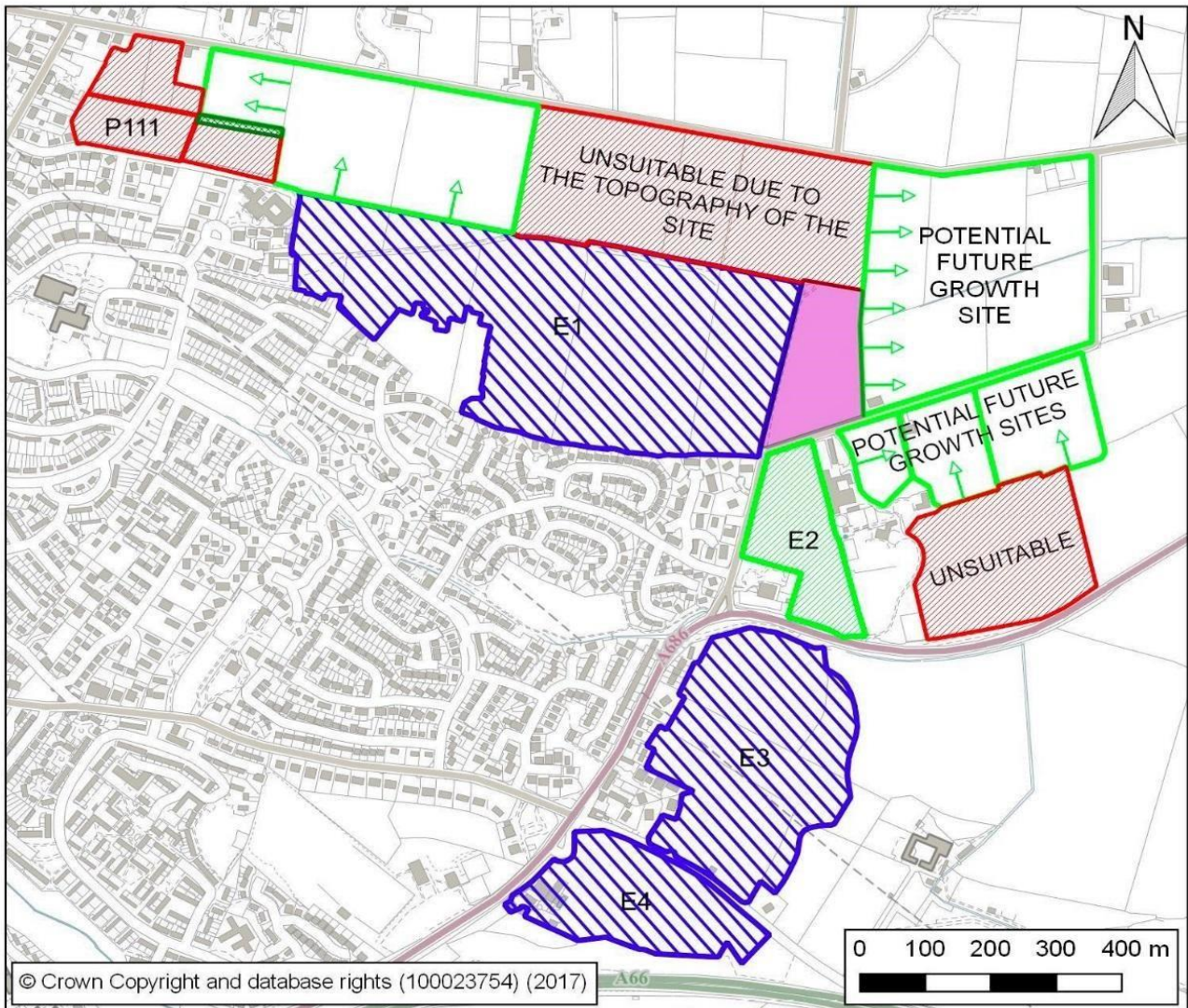
Key

-  Allocated Sites
-  Unsuitable Sites
-  Potential Future Growth Sites

Sizes of revised boundaries:

- N1a = 10.5ha
- N1b = 5.3ha
- N2 = 2.4ha

Revised Allocations - Future Growth Areas
Penrith East



Date: 14 February 2017
Scale: 1:9500@A4
Drawn by: KL/AD
Sites: E1, E3 and E4

Key

-  Allocated Sites
-  Unsuitable Sites
-  Under Construction
-  New Educational Facility
-  Potential Future Growth Sites
-  Strong Tree Belt