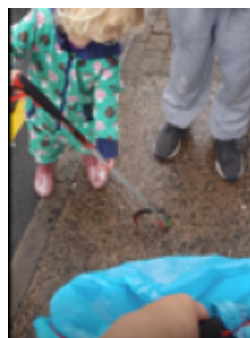
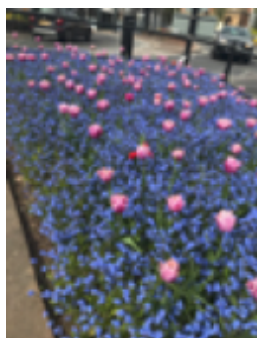


'Penrith in Bloom' Portfolio 2019

Based on RHS Marking Criteria



Copyright © 2019

This document has been prepared by Penrith Town Council.
No part may be reproduced or copied nor disclosed to third parties without the prior written consent of Penrith Town Council.



PENRITH IN BLOOM

Table of Contents

	PAGE
Our Town.....	3
Message from Mayor Doug Lawson.....	3
Background to Penrith in Bloom, 2019.....	4
Review of Progress.....	6-8
Train Station.....	9-10
Polytunnel.....	10-11
Salvation Army.....	12
Stricklandgate.....	13
Team Carleton Hall Walk (CHW).....	14
Great Dockray.....	15-16
Angel Lane.....	16
4EDEN - Eden Mencap.....	17
St Catherine's School.....	18
Queen Elizabeth Grammar School.....	18
Queen Street Nursery.....	18
Penrith Lion's 'Tea in the Park'.....	19
Penrith Methodist Church.....	19
Allotments.....	20
Thacka Nature Reserve.....	20
Penrith Beekeepers Association.....	21
Business Improvement District (BID).....	22
Gilwilly BID.....	23

Appendices

Appendix 1 - Publicity -.....	24
Appendix 2 - Participating Groups.....	25
Appendix 3 - Sponsors.....	26

Our Town

Penrith is an ancient market town situated to the East of the Lake District, and known for its ruined 14th Century Castle, heritage buildings, icons and local shops. The original site of the Castle is likely to have been a Roman encampment. Some claim the inhabitants of the town built the Castle as a defence against the numerous Scottish raids. The town's strong historical connection to Scotland is apparent in the 13th Centurey Seal of Penrith, which appears around the town, for example, in the Town hall and in wayfinder signs.



Penrith can also boast connections to King Richard 111, who, local people believe, lived at Penrith Castle for a time. Moreover, fragments of glass set into a window in St Andrew's Church are said to depict the crowned and sceptred head of the King. It is also understood locally that while building work was being undertaken at Penrith Castle, Richard lived for a time in the centre of the town at Dockray Hall, one of Penrith's beautifully preserved heritage buildings.

Nowadays, Penrith attracts many visitors, who come to enjoy the town's heritage buildings, cobbled lanes and independent shops. Regular annual events, such as Winter Droving, Penrith on a Plate and May Day, also attract visitors to the town. Strong social networks have created the driving force underpinning the efforts of residents, businesses and local community groups who are working together to build community spirit and local pride further.

Message from Mayor Doug Lawson

Penrith is delighted to be one of 72 finalists chosen from across the Uk to take part in the 2019 'Britain in Bloom' Campaign. The town is also proud to be included in the regional 'Cumbria in Bloom' Competition.

Penrith Town Council has again taken on a co-ordinating role for the 'in bloom' entries and is proud to provide funds for some new projects. We are also honoured to be involved with the community gardeners, the business community and the other community and voluntary organisations, who between them are creating spectacular floral displays and tackling huge global challenges such as climate change, plastic waste, and declining pollinator populations.

Community spirit is increasing, and the endavours of the past have led to a dynamic chain reaction in the town, with more and more people and community organisations now participating and learning about horticulture, growing edibles, the natural environment and making Penrith an environmentally friendly and 'plastic clever' town. Together we will continue to make a difference.



"Pride in the town is the driving force for everyone involved."



Background to Penrith in Bloom, 2019



The concept of '**Greening Penrith**' and **care for the environment** began a number of years ago. In 2011, several high-quality planters (with a life expectancy of 30 years) were installed around the Musgrove Monument. Several groups including **Penrith Action for Community Transition (PACT) Vitality of Penrith (VoP), Eden District Council, Freegle and other volunteers such as the Garden of**

Eden Community Gardeners came together to create flower beds around the town in previously unloved areas. Pieces of land were actively cultivated by the Community Gardeners who began to turn them into edible fruit and vegetable gardens for everyone to enjoy. More and more groups began to get involved, including **local schools, the Scouts and Eden Mencap**. Penrith Business Improvement District, known as **Penrith BID** was created in 2014, and began encouraging local businesses in the centre of the town to get involved in '**greening**' the town.' More hanging baskets and planters began to appear outside local business premises and around the town.

Past Awards - in 2012, the town won several trophies from Cumbria in Bloom, followed by an RHS Certificate in 2013. 2014 saw further improvements, and in 2015, with businesses and volunteers continuing to work together, the town achieved a Silver Gilt Award. Then in 2016, the town won the 'Most Improved Town' Award, followed in 2017 by the 'Best Large Town Award.' Also in 2017, the Community Gardeners were awarded an RHS Community Champion Award, while Penrith BID was presented with the 'Best BID' Award. In 2018, the town gained a great many awards from both Cumbria and Britain in Bloom.

Chain Reaction of Participation - Since 2018, there has been an increase in volunteers and the development of new horticultural and environmental projects in Penrith. It would appear that the aforementioned awards, combined with an increase in community spirit and close working relationships between community groups, business organisations, Penrith Town Council and other tiers of government, have created a 'chain reaction of participation,' the development of new projects and a strong foundation for 'Penrith in-Bloom,' 2019.

Penrith Town Council was set up in 2015. Since 2018 the Council has co-ordinated, supported and encouraged the 'in bloom' process, carrying out the routine 'backroom' work of promoting and supporting developments, managing the 'Penrith in Bloom' Facebook Page, liaising with other tiers of local government and engaging with local groups to evidence progress in the portfolios for 'in bloom' judges. The Town Council also supplies funding to some groups, to help them improve their work or develop ever more creative 'in Bloom' projects.



Review of Progress

(Criteria A1,2,3,4; B1,2,3; C1,2,3)

Maintenance of Planted Areas

All the 'in bloom' participating groups in Penrith (outlined in more detail in later sections of this portfolio), take pride in looking after their horticultural areas throughout the year, preparing the soil, choosing suitable plants, using home-made compost, cultivating, weeding, pruning and maintaining their projects to a high standard and in an environmentally friendly way. In addition, many new trees have been planted.

Passion & Creativity

Our tireless Garden of Eden community gardeners continue to pour knowledge, passion and creativity into the local area with themed plantings around the town, including flowers, trees, fruit bushes and other edibles. Themes have been well planned, bringing horticultural experience, care for the environment and community participation together to produce creative displays that result in extremely strong visual impressions at the Train Station (See Page 9-10), the Polytunnel (See Page 10-11), Salvation Army (See Page 12) and Stricklandgate (See Page 13). St Catherine's School (page 18), is among local schools involving pupils in growing and learning about edibles. In addition, a local resident in Carleton Hall Walk (See Page 14) has been motivated by the Community Gardeners to plant her own garden with blooms and edibles. She is also encouraging neighbours and their children to get involved. Penrith BID is again encouraging local businesses to sponsor beautiful planters and hanging baskets in the town. As a result, community spirit is building continuously, and pride in the town is growing ever stronger.

Year Round Interaction

Planning and team work throughout the year is extremely important. For example, the community gardeners are well organised and well informed about what is to be done weekly. Emails are sent out regularly by their team leader, outlining jobs that need to be done that week. There is no pressure, however, and the gardeners thoroughly enjoy the social interaction as well as the mental and physical exercise and, of course, the final results.

'Conversations' with the Community.

People who live in the town or visit often stop to chat to the volunteers as they pass by, admiring the creative horticultural work they are doing to enhance the town. Messages are received from local people and many of those arriving by train or passing through the town, comment on how beautiful the floral themes look (For example Page 10).

Information Sharing and Social Media Interaction

Sharing information plus strong interaction between groups and the community encourages progress. The Town Council, BID and others involved, including the Garden of Eden Community Gardeners, PACT, Team CHW, use a combination of press articles, posters, photos, videos and side-shows, to promote what each group is doing. Regular posts are 'liked' and 'shared' widely between different groups and their followers on social media. Community networking using these different forms of interaction helps to engage local people, build community spirit and increase feelings of pride in the community. (See Appendices 2&3, Pages 25&26 for lists of participating groups and sponsors).

Review of Progress Contd/....

(Criteria A1,2,3,4; B1,2,3; C1,2,3)

Increasing Health & Wellbeing Through Exercise.



Regular 'Green Gym' sessions take place weekly, with the small army of community garden volunteers spreading out around various locations in the town to expend energy and weed, plant and prune the different plantings.



Green Gym in the morning (Sun) at the Stricklandgate Fruit Garden 10-11am. Bend and weed, push and hoe, sweep sweep pause, chat!

Giving and Sharing Freely.

In March, 2019, the Community Gardeners working with Freegle organised Seedy Saturday. Strawberry plants, shrubs, seeds and 2 frog/newt pond liners were given away. Moreover, lots of seeds were exchanged, as well as apple and damson trees, blackcurrants, shrubs and over 100 strawberry plants. In addition, gardening books and fresh produce were exchanged free of charge. Many surplus plants have been donated to the community gardeners by local businesses, and have been carefully nurtured, often in the Community Gardener's Polytunnel, and then selected for inclusion in planting themes around the town; or they are shared with members of the local community, who are encouraged to develop their own horticultural skills.



Encouragement and Support for New Volunteers.

Over the past year, more residents and businesses have begun to participate in gardening. The Community Gardeners have lent support and shared horticultural and environmental knowledge and skills with other community groups in the town, for example, Team CHW (Page 14), the Great Dockray Community Group (Pages 15-16), also St Catherine's School (Page 18) and Queen Elizabeth Grammar School (Page 18)

Focus on Learning about Edibles, Healthy Eating. and Caring for the Environment

The Community Gardeners grow edibles in various different plots around town. Encouragement to plant healthy edibles has led some groups in the town, for example, Team CHW (Page 14), who are learning to plant vegetables, fruit and herbs, and to eat more healthily as a result.

Volunteers working with St Catherine's School pupils (Page 18) are helping pupils learn about growing and cooking edibles. An important off-shoot of the project is that the young people are snowballing what they learn to others, including their parents and friends, many of whom are now taking a closer interest in horticulture, the environment and healthy eating (Page 18)

Pupils involved in the Queen Elizabeth Grammar School (QEGS) Gardening Club have already won a Royal Horticultural Society Award for developing their own garden, and continue to learn about the benefits of gardening with support from one of their teachers and a local business which has provided free seeds and seed trays (Page 18), while the children attending Queen Street Nursery School (Page 18) are currently developing a project for very young children to learn about important aspects of the environment.

Review of Progress Contd/....

(Criteria A1,2,3,4; B1,2,3; C1,2,3)

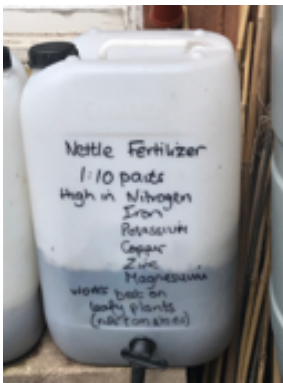
Promoting Gardening to Local Groups.

The Community Gardener's team leader regularly gives talks to pupils in schools and to local groups to increase understanding of the importance of gardening. Any funds received is used to support projects.

Supporting Mental and physical Health and Healthy Eating

A new community gardener, who suffers mental health difficulties has been enthused by her involvement in gardening with other community gardeners and is now growing her own healthy vegetables and fruit in her small garden.

Concern for the Environment: Mixing Food for Plants.



The community gardeners mix their own compost in the Polytunnel. They also make environmentally friendly feed at the Salvation Army base to help nurture new plants

Supporting Pollinators

Plants attractive to pollinators have been planted in plots all around town. Stimulated by the Penrith Beekeepers Association (Page 21), some allotments in town have set up beehives, and they grow plants and herbs attractive to bees and other pollinators.

Water Conservation.



In an effort to save water and help preserve our environment, the rainwater collected in water butts around town is used to water plants. Moreover, Penrith Action for Community Transition (PACT) has established a 'Refill scheme' across Penrith, with many shops and businesses now offering free tap water refills to members of the public



Plastic Free Penrith.

Groups working as a local collective have formed 'Plastic Clever Penrith,' a coordinated local response to reducing dependence on disposable single-use plastic. To help the businesses and residents of Penrith reduce their use of disposable single-use plastic, initial benchmarking data will be collated by volunteers conducting a simple questionnaire with local businesses. The intention is that the survey will prompt discussion about how other common forms of single-use plastic can also be reduced or even eliminated across Penrith. It will also help promote good practices for more sustainable alternatives, by sharing experience from shops and businesses which are already acting on this vital issue.



Review of Progress Contd/....

(Criteria A1,2,3,4; B1,2,3; C1,2,3)

Local Shops Now Offering Plastic Free Alternatives.

There has been a snowball effect as a result of action-oriented local groups and a variety of shops in Penrith, including 'Another Weigh,' 'Natures Health' and 'J&J Graham,' are now offering plastic-free alternatives, so we can now buy a growing range of food, drink and toiletries locally with no or very limited packaging. Profits from another Weigh go to support change and educate people to move into an alternative life-style.



New Tree Planting.



Prior to transfer of Fairhill Playing Field to the Town Council, a small area of the field was sold to United Utilities to create a water treatment area. As part of the arrangement, United Utilities committed to installing a planting scheme on the Town Council owned land. A plan was drawn up showing the planted area and the species of plant. 15 new trees were included in the arrangement. Community gardeners have also nurtured saplings and planted them later at Fairhill. (Page 12) . In addition, 12 fruit trees were donated to local schools.

Dog Mess , Litter Pics and Anti-Littering

Litter Picks are organised through the year by the Community Gardeners and Penrith Action for Community Transition, (PACT), and local residents. In addition, 270 youngsters



in Penrith Schools designed 25 anti-littering signs for the streets. These and other signs around town and in green spaces encourage local people to ensure their dog mess is collected and deposited in appropriate bins. In addition, the public are strongly encouraged to dispose of any litter in bins.



Installing New Street Furniture - Encouraging Thriving Public Spaces

Attractive benches and seating areas encourage people to gather together which in turn helps to increase a sense of community. An important aim for Penrith Town Council is to 'make a difference' by creating thriving public spaces in the town, to make areas more attractive for people to get together. In October 2018, the Town Council received 45 benches and seats from Eden District Council as part of the 'Devolution of Services' project. Some were in poor repair.

Therefore, in November 2018, the Council approved its own seats policy. A budget was allocated to undertake a phased replacement of the benches over a period of time. At the time of writing, a total of seven benches have been installed, one of which had been funded by a donor. More will be installed over time. The chosen bench is a heritage style with stylish aluminium seat ends and durable slats.



Community Gardeners

Train Station (Criteria A1,2,3: B1,2,3: C1,2,3)

Penrith's Garden of Eden Community Gardeners continue to work with Virgin Train, Eden Mencap/4EDEN and other volunteers, to create a hugely imaginative and fun project at Penrith Train Station, which is used by around half a million people annually. The volunteers often watch people leaving the train or standing up in carriages, admiring the project and taking photos. They have even heard from people who arrange to come and stay, thinking Penrith must be a good place to visit.



Train Station Contd/... (Criteria A1,2,3: B1,2,3: C1,2,3)

The Town Council received an email from one person passing through Penrith Station, as follows:

Email received 30/05/2019.

"This weekend I travelled to Penrith by train and lamented how dreary many stations were looking but when I arrived at the station my eyes fell on the quirky, friendly and colourful plant display and it felt good to be back in Penrith. We visit the town quite regularly and always enjoy the floral displays which pop up all over the town and the vegetable plots which encourage us all to eat healthier. All the hard work done by the organisers, volunteers and council really does make a difference.

I have been told that there are plans to upgrade the castle park and I hope this goes ahead as unfortunately this area is looking very sad and not a good reflection on the town. The planting is very colourful when it is in bloom but it does seem a very costly way to create colour when perennial planting can be labour saving and must provide a better habitat for wildlife. I will look forward to following how the park develops.

We love Penrith, thank you for continuing to make it successful."



Polytunnel (Criteria A1,2,3,4; B1,2; C1.2.3.)

The Community Gardener's Polytunnel Scheme is supporting the community effort to get people growing for themselves as well as improving the town. Plants for St Andrew's Churchyard and Stricklandgate Garden have been nurtured, as have new trees for the Police Cadets and numerous plants which are given away free. Summer seedlings for the Salvation Army and other areas around town are brought on here until planted out, as are left over plants donated from businesses in the town.



Community Gardeners

Polytunnel (Criteria A1,2,3,4; B1,2; C1.2.3.) . Contd/....

Volunteers from Eden Mencap also grow vegetables and help nurture plants in the Polytunnel.



In 2018, several 'In Bloom' judges commented that two trees were cutting out light to the polytunnel and external raised beds, so limiting growth that would eventually prohibit continuation of the project. The judges advised removal of the trees. Permission for removal was granted by Eden Housing and the Town Council awarded a grant to cover the cost of the removal, chipping and replacement with fruit and walnut trees.

After removal, bark chippings from the trees were saved and used around the Polytunnel to cover paths and help stop slugs and snails from damaging the garden.



Little hands making environmentally friendly compost



Rainwater Barrel in the Polytunnel.



'Chuckles' after receiving a sapling from the Police Cadets in an Evidence Bag



Salvation Army - Community Gardener's Base (Criteria A1,2,3,4; B1,2,3; C1,2,3)

The Community Gardener's Salvation Army base is used for different purposes, including, growing edible plants, producing environmentally friendly plant food and wormeries, and caring for the quirky Peace Garden. The Wall surrounding the garden is often covered by boxes containing foodstuff donated by local supermarkets and produce grown by the community gardeners. Local people are able to take what they need free of charge.



Fairhill (Criteria C1,2,3)



New trees nurtured in the Polytunnel and planted by Community Gardeners at Fairhill, (an 80 acre Green Space to the North of the Town).

Stricklandgate (Criteria: A1,2,3,4; B1,2,3; C1,2,3)

The Community Gardeners also care for the Stricklandgate garden which contains a variety of plants, including herbs such as mint, bayleaf, chives and rosemary as well as fruits, including strawberries, raspberries, rhubarb, blueberries, redcurrants, cherries, apples, pears and gooseberries. Local people, the schoolchildren who pass by on their way to school and visiting birds all share what is grown free of charge.



Team CHW, Community Gardeners (Criteria A1; B1,2; C1,2)

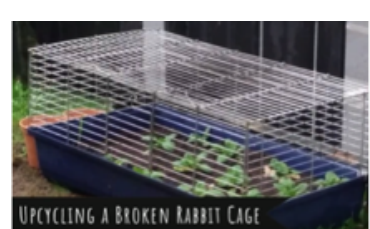
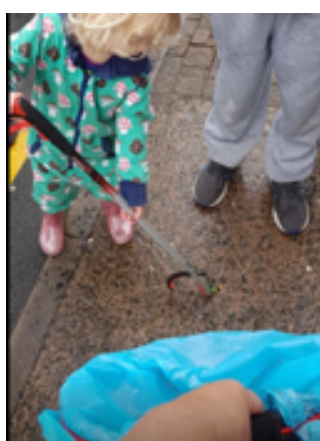
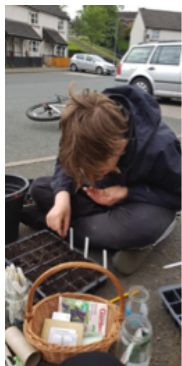
Based in Pategil, Penrith, the Carleton Hall Walk Gardeners Group (CHW) is a supportive neighbourhood gardening community learning to grow their own food by sharing knowledge and resources freely. A former social worker for Children's Services, is using the skills and knowledge developed during her career, to build a program of activities



around the needs and aspirations of her own local community, with the ultimate aim of helping families improve their health and well being. Link to inspirational video https://www.youtube.com/watch?v=_GQyhTAJyr8 about what motivated her to start her own gardening activities and subsequently set up the family gardening group on her street. Distinct benefits for mental and physical health are outlined.



Participants in the club meet bi-weekly, with activities designed to share gardening skills and advice, and grow produce, which then becomes freely available to all participants. The project aims to be a resource for families who are interested in reducing food waste, families who do not have sufficient access to fresh produce, and families wanting to take part in a free and fun regular outdoor activity.



Great Dockray Community Group - Richard 3rd Heritage Project ('It's Your Neighbourhood') (Criteria: A1,2,3,4; B1,3; C1,2,3)

Taking part in Cumbria and Britain in Bloom gave the impetus for residents and businesses in Great Dockray to come together to make the best of their immediate area. Initially, the group adopted the flower beds and added extra flower planters.

Next the group decided to develop a heritage and horticultural theme around King Richard 111, said to have lived at Penrith Castle and also for a short time at Dockray Hall. To foster interest and encourage local people to learn more about the town's royal heritage, it was decided to hold an event featuring 'The Red Wyverns.' The event took place on 20th April at the Penrith bandstand in Great Dockray, and featured a number of medieval themes and displays.



Subsequently, it was decided to arrange meetings with the Richard 111 Society to seek permission to use historical images related to the King. After speaking to their National Headquarters, the Society provided a letter from Buckingham Palace giving permission for the group to use images related to Richard 111 on flags, which were erected on listed buildings in the Great Dockray area.



Local businesses planted blooms and painted walls white. Subsequently images of King Richard 111 and the 'Rose en Soleil' were painted on the freshly painted walls by a talented local artist.



Great Dockray Community Group - Richard 3rd Heritage Project ('It's Your Neighbourhood') (Criteria: A1,2,3,4; B1,3; C1,2,3) Contd/...

In addition, liaison with the Richard 111 Society resulted in local volunteers purchasing a number of 'Desdemona' white roses, (which it was later discovered had won the 25th Gold Award at Chelsea Flower show). The roses were initially chosen because of their fragrance, their lack of thorns and resistance to disease. When underplanted with red begonias, a connection to the War of the Roses is also made.

To continue the heritage theme, talks by experts from the Richard 111 society will be taking place in Penrith Library on 12th July.



Angel Lane

Having observed what was being done in Great Dockray and how it enhanced the area, businesses close-by in Angel Lane, also developed creative themes.



4Eden Eden Mencap (Criteria: A2,3; B3; C1,2)

4EDEN, also known as Mencap, provides opportunities for young people to explore their interests, build their skills and confidence and be valued by the local community. A number of new 4EDEN projects aim to reduce the support on paid services and increase opportunities to get involved in a variety of groups, clubs and volunteering. Mencap volunteers care for the garden areas outside their base and work with other volunteers at various locations around town - including the Polytunnel, where they grow edibles.



St Catherine's School (Criteria: A1,2,3,4; B3; C1,2,3)



Funding from Penrith Town Council has secured a first-class growing area for the out of school gardening club at St Catherine's School in Drover's Lane, Penrith. Gardening sessions take place after school at 3.30pm, when pupils learn how to grow fruit and vegetables and experience taster and recipe sessions. The older children are partnered with younger pupils, with a new set of children taking part each year.

Many children have gone on to initiate gardening with parents, grandparents and relatives. Parents and siblings gather by the raised beds to meet children from school and watch what they're growing. At the weekends, the tarmac area becomes a car park so that adults who have been inspired can also take part.



Queen Elizabeth Grammar School (QEGS) (Criteria A1,2,3;B2;C1,2,3)

The new QEGS gardening club, led by the school's Maths Teacher, is still quite small (around 3-4 students usually) but they have had a few successes, including planting around a new school 'buddy bench' that was funded by Penrith Rotary Club. The bench is intended to address loneliness and foster friendship in the playground.



Queen Street Nursery (A1,3; B2; C1, C2)

Queen Street Day Nursery operates from a Grade II listed building in the centre of Penrith. The nursery offers a small garden where all the children can come into contact with nature, plants and flowers. Many of the children in the nursery live in town centre flats and have no direct contact with gardening. Queen St Nursery encourages all the children to get their hands dirty and have a go at planting, growing vegetables and flowers. Playing in the soil and watering flowers, handling plants with care and respect and looking for bugs in the garden creates life long, positive learning experiences for the children. The nursery is a great supporter of Britain in Bloom and this year the children have been learning about issues around plastic pollution and how to recycle. They are currently busy recycling all manner of objects as plant pots.

Penrith Lions: 'Tea in the Park' at Castle Park (Criteria B1,2; C1,2,3)



There is clear recognition that Castle Park is a historical asset that is not used by the community to its full potential. 'The Lions of Penrith' recognised that the Park is underused,

and are currently organising a new grassroots 'Green Spaces' project to encourage the use of this and other underused spaces in the town for community events. The group are organising the first event, titled 'Tea in the Park' in 2019. The heritage event is due to take place on 14th July, complete with strawberries and cream and music.



Penrith Methodist Church (Criteria: A1,2,3; B1,2; C1,2,3)



'In Bloom' judges suggested in 2018 that it might be a good idea to hold a floral competition. Although not a competition per se, an event organised by Penrith Methodist Church in May 2019 can be seen as Penrith's unique interpretation of a Flower Show, with a plant stall, exhibitions and displays. During WW2, the hall at the Methodist Church was used for feeding the troops. To remember them and all those who lost their lives in the Great War, several acrylic Tommies were borrowed from the Town Council and were on display with poppy displays over the weekend. A power point display featured photos of local people,



children and dogs in their gardens along with descriptions of what their gardens mean to them.



Allotments (Criteria: A1,2,3; B2,3; C1)

Ownership of the allotments sites in Penrith transferred to Penrith Town Council from Eden District Council in July 2016. There are approximately 200 allotment plots across four sites in Penrith as follows: Salkeld Road – 30 Plots; James Street – 14 Plots; Folly Lane – 43 Plots; Brackenber Close - 69 full size plots, some divided in half, plus 38 separate hen runs.



The allotments are managed and run by the Penrith Allotment Association who are continuing to do this on behalf of Penrith Town Council. The Association handles all enquiries, manages vacancies and maintains a waiting list for all the allotment sites.



Planting includes edible and pollinator friendly plants. Following a get together of some of those involved in Penrith in Bloom, the Penrith Beekeepers Association set up Beehives in some of the allotments.

Thacka Nature Reserve (Criteria: A1,3; B1,2,3; C1,2)

Covering 6 hectares, Thacka Nature Reserve lies close to Gilwilly Industrial site in Penrith. In 2010, after Penrith had suffered damaging floods, the Environment Agency completed a flood alleviation scheme around Thacka Beck to reduce chances of flooding in the town from 20% to 1%. Prior to the



construction of the new flood storage reservoir, the site had offered very little in the way of habitat for wildlife. However, Thacka



Nature Reserve now provides an easy circuit around the reserve with grazing for cattle and hay meadows, wet grassland, scrub, hedges and ponds providing an impressive diversity of habitats. Along with Thacka Beck, the Nature Reserve provides homes for a wealth of wildlife, including a remarkable number of birds, pollinators and pond life. In Spring,

Blackthorn and other blossom, including Marsh Marigolds flourish as migrant birds return. Summer brings butterflies to the colourful hay meadows, while Swallows, House Martins and Swifts catch insects over the ponds. Flocks of Fieldfare and Redwing feed in the hedgerows in the Autumn while thistles and knapweed attract flocks of Goldfinch. In the Winter months, Moorhen and Mallards take up residence.



Penrith Beekeepers Association (Criteria: B2; C1,2,3)



Penrith Beekeepers Association was set up to promote the craft of beekeeping and to educate the public about the benefit of bees in the environment. Regular meetings and training sessions give members opportunities to learn more about



beekeeping issues and exchange knowledge and news. Visits to schools and presentations to community groups are made to explain the importance of bees to the environment as well as what plants are important to support pollinators.

A £990 grant from Penrith Town Council in June 2018, helped the Penrith Beekeepers Association to purchase an Arnia Remote Hive Monitoring System. It consists of a battery powered system of sensors which are placed in frames inside the hives and metal scales that fit under the hives to record their weight. Each hive to be monitored is fitted with selected sensors, including a hive scale and optional sensors for hive activity, brood temperature and colony acoustics such as flight noise, fanning noise and hive activity.

Installing the Arnia Remote Hive Monitoring System



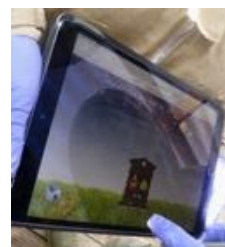
Installing the system



Placing the Hive on Scales



Placing the Sensors



Viewing output on monitor

The Penrith Beekeepers have used the system to collect the data on the health and activities of two colonies of bees; one in a polystyrene hive and one in a cedar hive. The data which can be collected from any internet based device such as a smartphone, tablet, PC or MAC Computer, has enabled the beekeepers to monitor the health of these colonies over the Winter period. Using special graphs generated by the system, they are then able to compare the conditions and health of the bees in the two hives.

Information is relayed to the beekeeper's computers and pictorial and graphical presentation of data enables them to confidently recommend either wooden or polystyrene hives to beginner beekeepers, depending on which one seems to provide better protection for the bees during the cold, damp Cumbrian months.

Ongoing learning is a key focus for the beekeepers, and plans are in the pipeline for some of their group to visit their counterparts in Slovenia, to learn more about that country's extensive beekeeping heritage.

Penrith Business Improvement District (BID) (IYN Application)

(Criteria: A1,2,3,4; B1,2,3; C1,2,3)

The BID's 'Greening Penrith' initiative culminated in winning awards at Britain in Bloom and Cumbria in Bloom in 2018. Businesses have again been encouraged to get involved. Progress is guided by an enthusiastic board of local businesses, people and charity representatives as well as a representative from Penrith Town Council. Local traders and businesses are investing in improving the town, for everyone's benefit, including themselves, their staff and their customers.

Having secured some funding from Penrith Town Council, Penrith BID is co-ordinating plans for the town centre's popular floral displays. Local businesses are encouraged to pay for hanging baskets and sponsor some of the displays. There are a selection of greening options: Town Centre Planters, Beehives and pre-grown 16" hanging baskets which are watered throughout Summer and can be supplied with or without a bracket.



Gilwilly BID (Criteria: A1,2,3,4; B3: C1,2)

Well served by a single access road, the Gilwilly Industrial Estate lies to the East of the Town and hosts a diverse range of over 150 businesses, from outdoor clothing retailer and vehicle repair shops to large haulage firms and manufacturers on Penrith Business Parks.

The Gilwilly BID Board was set up to liaise with local authorities, listen to the needs of businesses on all the Business Parks and help shape and improve their shared business environment. Work is ongoing to promote a clean and appealing environment, and develop plans for improving access and signage, which in turn would help highlight the presence of businesses. In addition, walkways and cycle paths are being improved to encourage people to walk or ride to the estate. Businesses are also involved in finding better ways to manage waste; and are in talks to encourage consistent street furniture and the number of bins available on the Business Parks.

Some areas on the estate are attractively planted and welcoming, with shrubs, flowers and even picnic areas giving pleasure to those visiting and working in the large business parks.



Appendix 1 - Publicity - Press, Social Media, Videos and Slide-Shows

Press articles about 'Penrith in Bloom' - Press releases related to 'in bloom' are sent out to the press, and articles appear regularly in Eden Local, Cumberland & Westmorland Herald and Cumbria Crack. Examples as follows.



Eden Local Community Magazine



Cumberland & Westmorland Herald



Cumbria Crack

Penrith Facebook Pages: Besides the Town Council's dedicated 'Penrith in Bloom' Facebook Page, several other Pages (below) regularly share videos, slide-shows and posts illustrating progress. These posts prove extremely popular with the local community, and all the pages have a high number of 'followers' and 'post likes.'

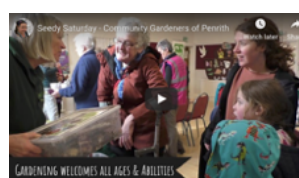


Videos and slide-shows - Many videos and short slide-shows related to 'Penrith in Bloom' have been created by a talented community gardener, That's TV and the Town Council, and are posted on the 'Penrith in Bloom' Facebook page at:

<https://www.facebook.com/PenrithInBloom/>

A number of videos related to 'in bloom' also appear on the Penrith Town Council website - <https://www.penrithtowncouncil.co.uk/media-publicity/podcasts-and-videos/>

A few examples below:



Appendix 2 - Participating Groups

The following groups are participating in Penrith in Bloom, 2019,

Garden of Eden Community Gardeners

- **Train Station**
- **Polytunnel**
- **Salvation Army Base and Peace Garden**
- **Stricklandgate Edible Garden**

Team CHW, Community Gardeners

Great Dockray Community Gardeners' Group

Angel Lane Businesses

4EDEN

St Catherine's School

Queen Elizabeth Grammar School

Queen Street Nursery

Tea in the Park (Penrith Lions), Castle Park

Penrith Methodist Church

Allotments

Thacka Nature Reserve

Penrith Bee Keepers

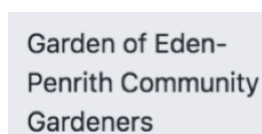
Penrith Bid

Gilwilly BID

Appendix 3 - Funding and Sponsors

SPONSORSHIP

Our many business supporters within the town have given sponsorship in kind.



Great Dockray Residents



PENRITH BID
BUSINESS IMPROVEMENT DISTRICT



Yorkshire Trading Co.
Where value's born and bred.

Angel Lane
Businesses